



Est. 2003

# Western Engineering Consultants, Inc.

## PROJECT EXPERIENCE

2003-2004

0003.003.00

### Highlights

Planning & Engineering Services – Building location, grading, drainage, detention system, floodplain issues, access, gas-electric-storm-sanitary-water-and fire utility designs, and Storm Water Management plans and report.

### Project Cost

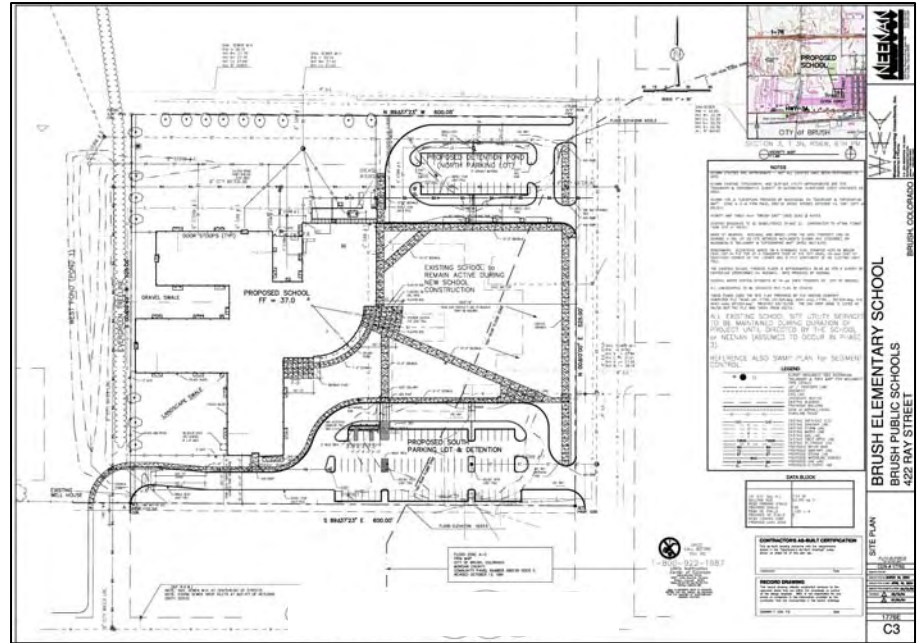
\$13,500 Consulting  
\$250,000 Construction

### Client

The Neenan Company

# Thomson Primary School

Brush, Colorado



### Project Description

Western Engineering Consultants (WECI) was hired by The Neenan Company to perform engineering and planning services on a new addition to the Thomson Primary School. In response to the growing population, the school needed additional classrooms to house the students.

WECI provided building location (horizontal & vertical), grading, drainage, detention system, floodplain issues, access, gas-electric-storm-sanitary-water-and fire utility designs, and Storm Water Management plans and report. An extension of the City public water main was also required, including easement dedications.



Civil Engineering · Land Planning · Landscape Architecture

20 South 5th Avenue, Brighton, CO 80601 · www.westerneci.com · Phone 720 685-9951