



Western Engineering Consultants, Inc.

PROJECT EXPERIENCE

Est. 2003

2007

0108.001.00

Highlights

Planning Commission member – Pastor Rex Bell sought WECE's expertise to fast track and complete their Conditional Use (City Council Public Hearing) process. WECE was up to the task completing the project in less than 90 days from notice to proceed.

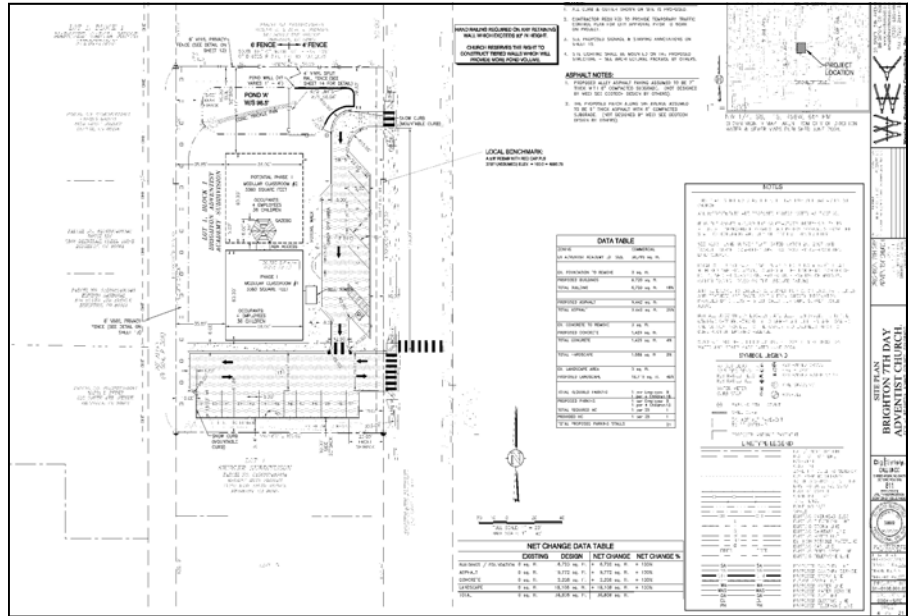
Client

Seventh Day Adventist Church

Project Description

Pastor Rex Bell, also Brighton Planning Commission member – retained Western Engineering Consultants, Inc. for their expertise in completing quality development projects within the City of Brighton. WECE helped the Church take the concept of a Childcare Center from vision to fruition. The project was fast-tracked and approved for construction in less than 90 days from notice to proceed even though the process required City Council approval. Site designs included grading, parking, access, signage, landscaping, and detention pond system. Although the lot was residentially zoned, the project had to achieve a Conditional Use public hearing approval and meet Commercial Design standards. WECE also assisted the Church with building elevation renderings, screening, and lighting improvements.

**Early Childhood Development Center
Brighton, Colorado**



Civil Engineering · Land Planning · Landscape Architecture

20 South 5th Avenue, Brighton, CO 80601 · www.westerneci.com · Phone 720 685-9951