



Est. 2003

Western Engineering Consultants, Inc.

PROJECT EXPERIENCE

2004

0005.001.00

Lot 1B, Block 1, Platte Industrial Center

Evans, Colorado

Highlights

23,600 sq. ft.
office/retail bldg

79 stall parking lot

Detention & drainage system

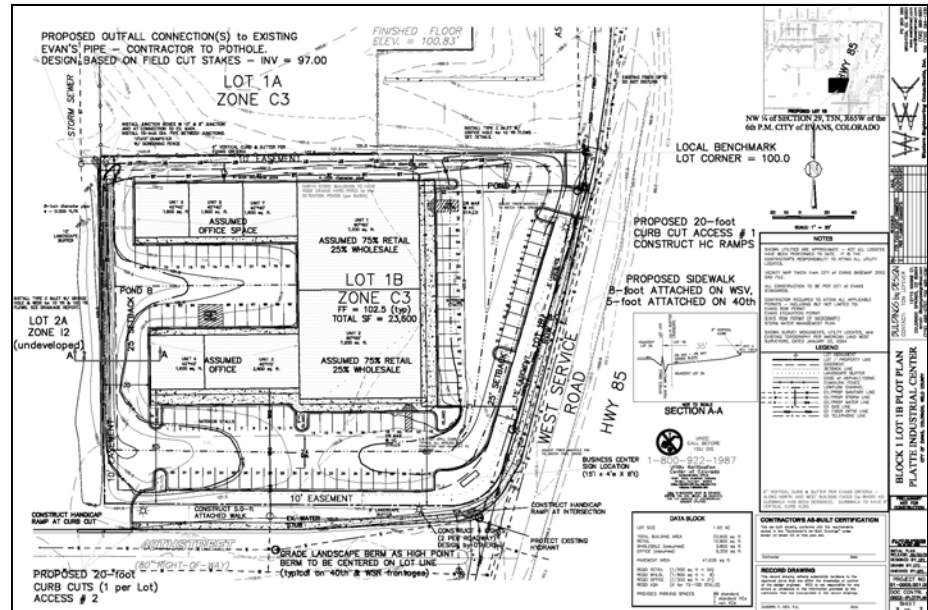
Streetscape Landscaping

Project Cost

\$1,300,000

Client

Buildings by Design, LLC.



Project Description

Western Engineering Consultants, Inc. (WECI) was retained to provide complete planning, engineering, and landscape architectural services necessary to achieve City of Evans approvals necessary to construct the retail and office building and parking lot.

WECI provided site layout, grading, drainage, storm system, utility, landscape architecture, and construction storm water management design services for the 1.92 acre site located just off of HWY 85 along the West Service Road.

The site was bound on two sides by public roadways which required complete streetscape landscape designs.

Civil Engineering · Land Planning · Landscape Architecture

20 South 5th Avenue, Brighton, CO 80601 · www.westerneci.com · Phone 720 685-9951