



Est. 2003

# Western Engineering Consultants, Inc.

## PROJECT EXPERIENCE

2006-2007

1007.002.00

### Integrated Resource Systems—Fuel Farm

Wheat Ridge, Colorado

#### Highlights

FDP Amendment

Fuel Farm Site Design

Spill & Rainfall Containment

SPCC Plan

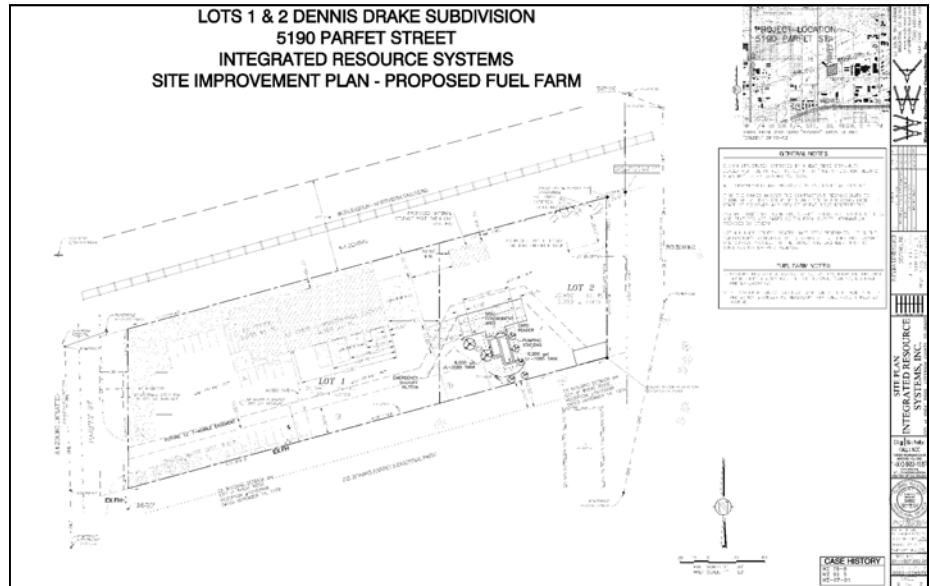
State, Local & Fire District Approvals

#### Project Cost

\$450,000

#### Client

Integrated Resource Systems Inc.



#### Project Description

Western Engineering Consultants, Inc. (WECI) was retained by the largest private snow removal contractor in the State of Colorado in order for them to expand their operations and complete a fuel farm facility at their Wheat Ridge headquarters.

WECI provided complete planning, engineering, and landscape architectural services in order to achieve City, Fire District, and State approvals.

WECI services included: Final Development Plan amendment, site layout, grading, storm drainage, utility, landscape architecture, and construction storm water management design services for the 1.99 acre site located near I-70 and Ward Road.

Civil Engineering · Land Planning · Landscape Architecture

20 South 5th Avenue, Brighton, CO 80601 · www.westerneci.com · Phone 720 685-9951