



Western Engineering Consultants, Inc.

PROJECT EXPERIENCE

Est. 2003

2007-2008

1007.005.00

Highlights

Use By Permit

Mag Chl. Farm Site Design

Spill & Rainfall Containment

Board of Adjustments Hearing

Development Plan Approval

Project Cost

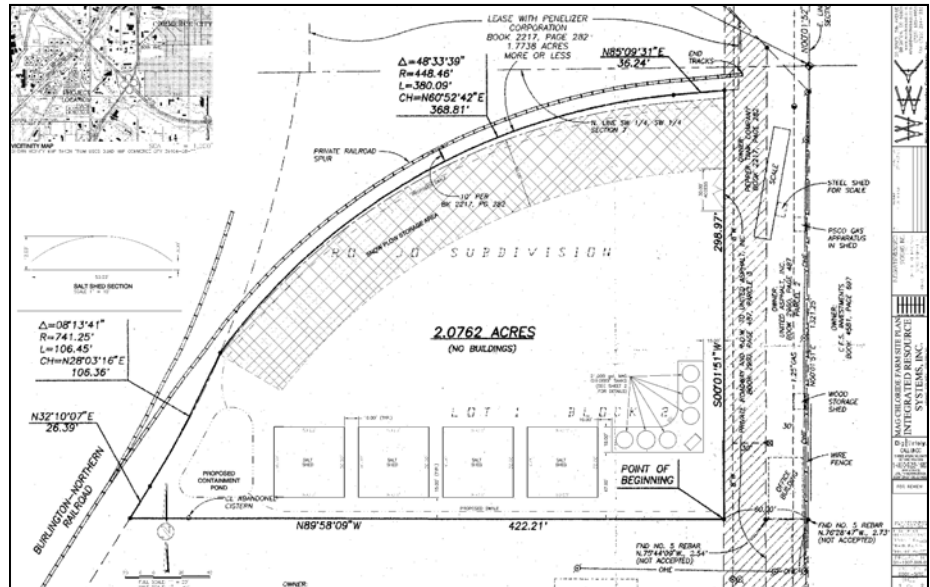
\$700,000

Client

Integrated Resource Systems
Inc.

Magnesium Chloride Farm

Commerce City, Colorado



Project Description

Western Engineering Consultants, Inc. (WECI), was retained by the largest private snow removal contractor in the State of Colorado in order for them to expand their operations and complete a fuel farm facility at their newest property in Commerce City.

WECI provided complete planning, engineering, and landscape architectural services in order to achieve City, Fire District, and State approvals necessary for Integrated Resource Systems (IRS) to complete their six—20,000 gallon (120,000 total) magnesium chloride tank farm, salt sheds, and snow plow lay-down areas.

WECI services included: Development Plan submittal, site layout, grading, storm drainage, utility, landscape architecture, and construction storm water management design services for the 2.21 acre site located near I-270 and Vasquez Blvd.

Civil Engineering · Land Planning · Landscape Architecture

20 South 5th Avenue, Brighton, CO 80601 · www.westerneci.com · Phone 720 685-9951