



Est. 2003

# Western Engineering Consultants, Inc.

## PROJECT EXPERIENCE

2006

0005.002.00

### Koldeway Industrial Sub. — Dahl Plumbing

Loveland, Colorado

#### Highlights

Industrial Zoned—  
13,842 sq ft  
Office/Warehouse

City Streetscape

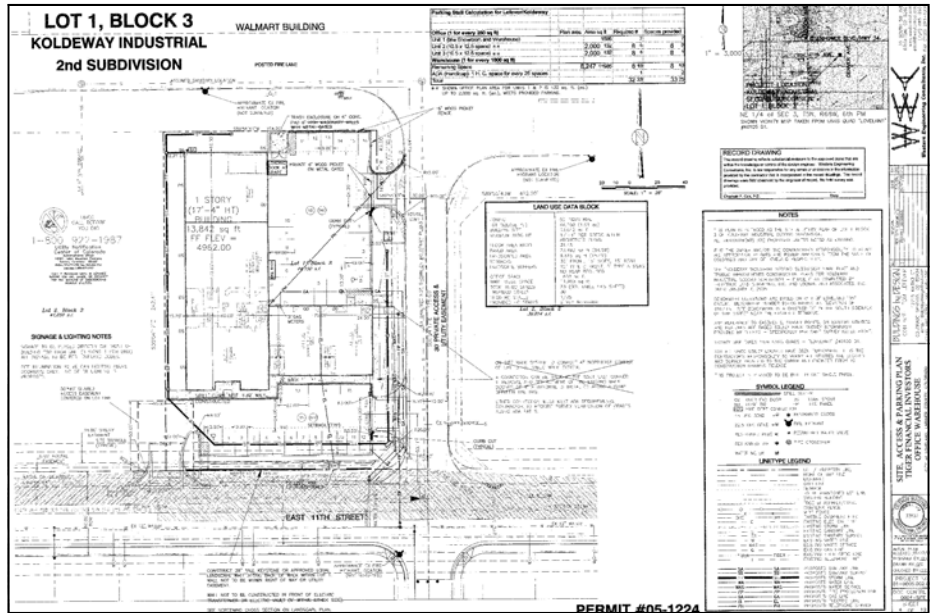
Landscaping

#### Project Cost

\$1,267,000

#### Client

Buildings by Design, LLC



#### Project Description

Western Engineering Consultants, Inc. (WECI), was retained for a second project with Buildings By Design based on their track record for quality and efficient engineering and planning services.

WECI provided complete planning, engineering, and landscape architectural services for the first development to be approved in the Koldeway Industrial Subdivision.

WECI services included: site layout, grading, storm drainage, utility, landscape architecture, and construction storm water management design services for the 1.01 acre site located just off of HWY 34 behind the Wal-Mart Super Store in the City of Loveland.



Civil Engineering · Land Planning · Landscape Architecture

20 South 5th Avenue, Brighton, CO 80601 · www.westerneci.com · Phone 720 685-9951