

Est. 2003

Western Engineering Consultants, Inc.

PROJECT EXPERIENCE

2005-2008

0034.001.00

Highlights

Planning, engineering and sub-contracted surveying services

Hangar and clubhouse complex for exclusive Jet owner members

Project Cost

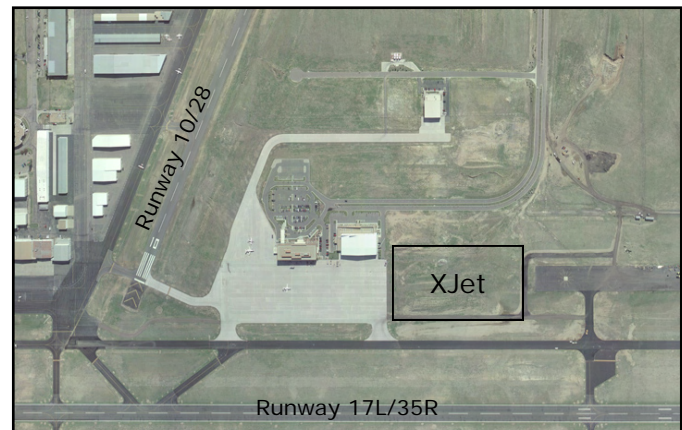
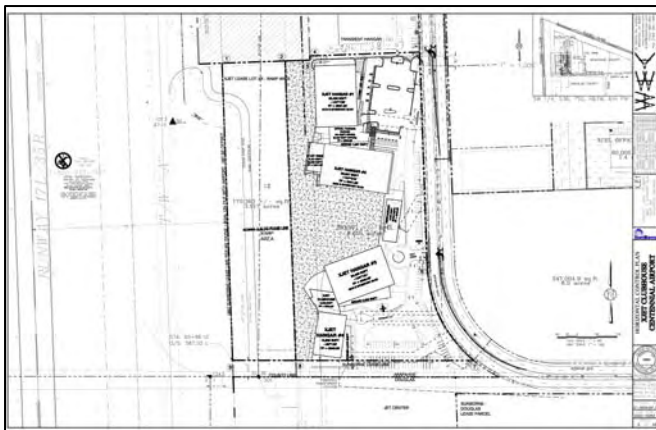
*\$12 million Construction
\$325,000 Engineering*

Client

XJet Club LLC

XJet Clubhouse and Hangar Complex

Centennial Airport, Colorado



Project Description

Western Engineering Consultants (WECI) was hired for its expertise of completing development at Centennial Airport. WECI took this property through planning and engineering applications including development review with the Centennial Airport Authority, Arapahoe County South Metro Fire District, and Arapahoe County Water and Wastewater Authority.

The XJet project consisted of three aircraft hangars, each of approximately 20,000 square feet plus ancillary office and support space, a two-story restaurant/clubhouse building of 15,608 square feet, including restaurant and kitchen facilities, a members' club, and offices and support space for club and flight operations. The maximum hangar elevation is 50 feet at the peak and slopes to a minimum elevation of 40 feet. The maximum Club/Restaurant elevation is 35 feet.

Grading allowed the two story clubhouse to be accessed at a mid level between the upper and lower stories. This allows the clubhouse to have a one story presence at the primary guest entry and elevates the entry court so that it is not obstructed by the parking lot to the south. The lower level of the clubhouse and all three hangars have varying finish floor elevations due to the extensive ramp frontage.

WECI was also tasked to bring the incomplete regional drainage designs and studies current with County standards while provide complete regional drainage designs for the Airport ponds located adjacent to Runway 10/28.

Civil Engineering · Land Planning · Landscape Architecture

20 South 5th Avenue, Brighton, CO 80601 · www.westerneci.com · Phone 720 685-9951