



Western Engineering Consultants, Inc.

PROJECT EXPERIENCE

2008-2009

1002.002.13

Centennial InterPort™ Taxilane Sierra

Centennial Airport, Colorado

Highlights

Planning & Engineering Services

WECI prepared taxilane Sierra designs concurrent with the SunBorne FBO office/hangar, Regional Pond L-1, Lot 15, and Master Infrastructure projects.

Project Cost

\$600,000

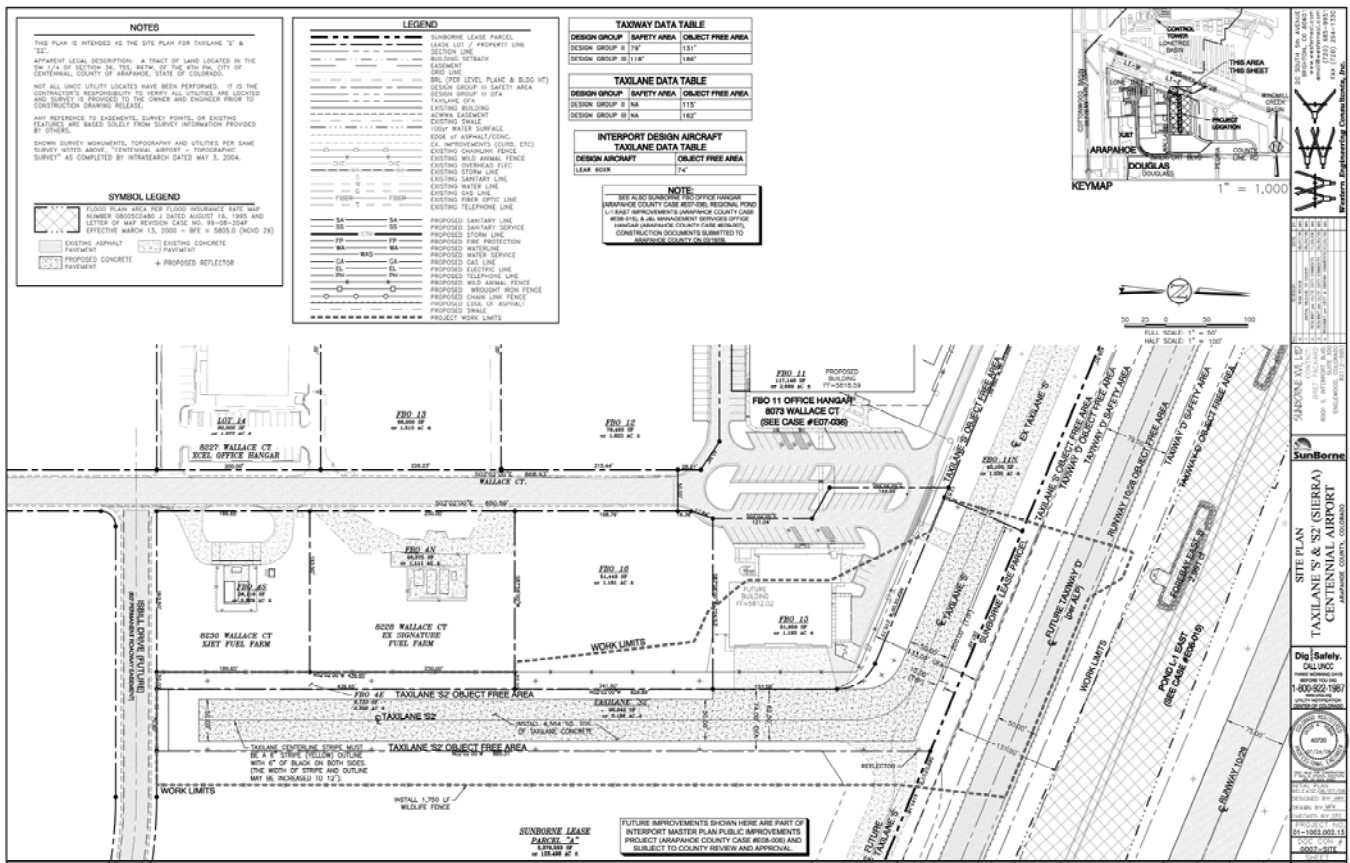
Client

The SunBorne Companies

Project Description

SunBorne Companies, as part of the necessary infrastructure to serve their Lot 15 development underway by J & L Management Services, needed to complete the extension of existing taxi-lane Alpha east to serve the J & L site. Taxi-lane Sierra was conceptualized to complete aircraft access. WECI prepared designs necessary to meet required horizontal and vertical spacing and access criteria, drainage, grading, utility, fire access, erosion control GESC, and easements for the County. WECI also prepared site designs necessary to meet all additional aviation criteria (FAA) for taxi lanes, object free areas, specific aircraft design group access and aprons, proximity to future ACPAA Taxiway Delta object free and safety areas, and FAA permitting (7460, crane, etc).

Taxi-lane Sierra also required special design conditions to match two constructed fuel farms and the existing adjacent roadway designed by others while balancing project costs and future development impacts.



Taxilane Sierra is expected to be constructed in 2009.

Civil Engineering · Land Planning · Landscape Architecture

20 South 5th Avenue, Brighton, CO 80601 · www.westerneci.com · Phone 720 685-9951